

Basic History

The Duffy/Greenstone area has a rich history of riding and racing with National events, 2-day events, hare scrambles and enduros. The primary riding area is the Duffy Lake/Greenstone Mountain area with two additional areas at Inks Lake and Chuwhels Mountain.

Thru the efforts of the Greater Kamloops Motorcycle Association (GKMA) in existence for over 40 years; three main areas are promoted for racing and recreational camping/riding.

Duffy Lake Campground

Located 45 minutes from Kamloops, this multi-use campground provides 53 campsites, great fishing (2-4lb rainbow trout) and cool water for swimming after a dusty ride. GKMA has a Partnership Agreement with Recreation Sites and Trails BC to manage and maintain the Duffy Lake campground. Volunteers provide garbage pick-up, infrastructure repairs/maintenance and fee collection. Fees collected by GKMA volunteers go directly back to trail maintenance and costs associated with site operations.

Pendleton Creek Campground

Located approximately 10km before Duffy Lake this multi-use campground can accommodate up to 25 vehicles units. The Greater Kamloops ATV Association manages the Pendleton Creek campground through a Partnership Agreement with Recreation Sites and Trails BC. The agreement provides for the collection of fees to cover the cost of managing and maintaining the campground and local trails.

The Future of This Trail System Depends on YOU!
Respect the Land, the Water, the Wildlife and the Rights of Others.
Please Ride Responsibly!

What Do You Need To Know Before You Go

Where Can I Ride?

- Only designated trails that are signed and on the map.
- Riders may be cited for operating a vehicle on a trail not intended or signed for that use.
- Quads riders should refer to map/legend for list of trails where riding is permitted.
- Larger OHVs are permitted on roads only.

Things to Avoid;

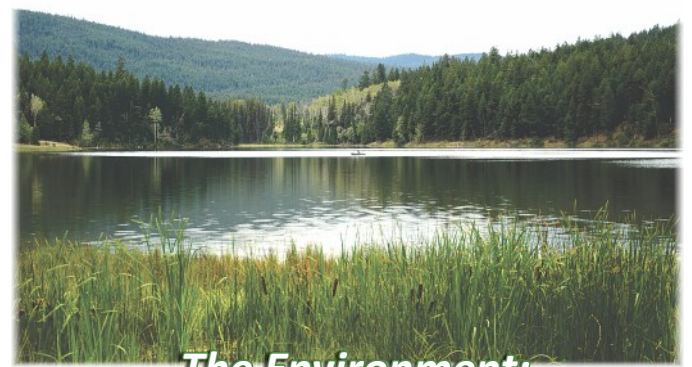
- deactivated roads or trails.
- making your own trail.
- muddy trails, wet areas, or travelling through water holes.
- No mudbogging.**
- Forest Service Roads (FSRs) unless you have proof of liability insurance (\$200,000 min) and a valid driver's licence and must wear a helmet.
- travelling on a trail that can cause erosion problems, such as steep hillsides and road cut-banks.
- private land.
- grazing leases.
- trails that are narrower than your vehicle.
- spinning wheels/tracks to create rooster tails and quick, hard acceleration that ruts and erodes trail surface.
- Accelerate slowly.**
- disturbing livestock and damaging forage. Give livestock the right of way and do not spook cattle.

Winter Riding?

- Only designated trails that are signed and on the map.
- Do not ride areas with less than 30 cm of snow.
- Spiked tires can damage the environment.
- Do not ride where soil/plants are visible, to avoid damaging soils and vegetation.

What Else Do I Need To Know?

- Helmets must meet the Canadian Standard Association (CSA).
- Operating an OHV under the influence of drugs or alcohol is strictly prohibited.
- Riders may be cited for operating vehicles in a careless, reckless, or damaging manner on or off trail. Please **Tread Lightly!**
- Operating a vehicle in a manner that threatens the safety of others or property is prohibited.



The Environment: Conserve, Protect and Enjoy!

Trail Stewardship and Trail Maintenance

The Duffy Lake/Greenstone area has 132 km's of signed designated trails. A wide variety of easy and technical trails are available to ensure good riding for all. Approximately 80% of the trail network is easy to moderate in difficulty rating. The Duffy Lake/Greenstone area has connecting trails to the Chuwhels/Inks Lake riding area; check your fuel before heading out on the approximate 80 km of loop trail.




Volunteers from local OHV groups have made a significant effort in recent years to clear excessive blow down attributed to the current Forest beetle infestations. Volunteers continue to remove this dead timber as blow down occurs.

REQUIRED TO RIDE

- ✓ SILENCER (Max 96db)
- ✓ SPARK ARRESTOR
- ✓ STAY ON TRAIL
- ✓ RIDE RESPONSIBLY



These trails and facilities are operated and maintained for your enjoyment through a partnership agreement between the Greater Kamloops Motorcycle Association, the Greater Kamloops ATV Association and Recreation Sites and Trails BC. RSTBC manages forest recreation sites and trails throughout the province to encourage outdoor recreation, improve fitness and celebrate our heritage.

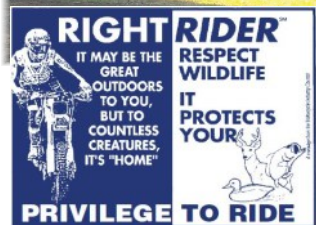


The Big Picture

Dispersed camping and riding in the Duffy/Greenstone area has been detrimental to adjacent sensitive grasslands and ecosystems and are a significant safety concern along the Duffy FSR during periods of heavy industrial traffic. In response ; some areas have been closed to camping and "Trail Sustainability Assessments" have been completed to determine trails and areas requiring remediation or closure. **Please respect the environment, stay on designated trails and only camp at the Duffy Lake and Pendleton Creek campgrounds.**

It should be noted that closures are as result of consultation with local government officials and affected stakeholders; including First Nations, range tenure holders, forest licensee's, and recreation user groups.


The Duffy/Greenstone area requires further improvements (trail signage, trail rehabilitation etc.) to better improve, manage and preserve the riding experience for all.



Please respect the environment, stay on the trail and have a great time!

Duffy - Greenstone Off Highway Vehicle Trail Map


Please obey all posted signs, rules and regulations, respect others and enjoy your stay!



Trail Closure Marker

- Open to motorcycles only.
- Open to motorcycles & ATVs less than 50" in width.
- Signs with a yellow slash indicate the route is not recommended for such use
- Signs with a red slash indicate that the use is prohibited.

Degree of Difficulty



Ratings are assigned to trails under ideal conditions and are based on difficulty compared to other trails in the area. A trail rated easiest by GKMA's standards could possibly be rated intermediate or even expert elsewhere. Trail conditions are always subject to change due to the weather and other acts of nature.

Road or Trail Restrictions

Please obey any posted signs restricting OHV use of roads & trails.

Please report all forest fires. Phone toll-free: 1 800 663 5555

For More Information
www.sitesandtrailsbc.ca




Duffy - Greenstone Off Highway Vehicle Trail Map

Visitors Map and Guide



In partnership with
 The Greater Kamloops Motorcycle and Greater Kamloops ATV Associations and Recreation Sites and Trails BC





Duffy - Greenstone OHV Trails

Recreation Sites and Trails BC

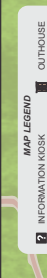


Duffy Greenstone OHV Trail Legend

- OHV Trails**
- Training Trails
 - Easiest
 - Moderate
 - Expert
 - Extreme
 - Forest Service Road
 - Other Existing Roads
- Provincial Parks & Protected Areas**
- Recreation Site
 - Training Area
 - Area of Closure
 - Private Lots
 - Recreation Site Campgrounds
 - Staging Area

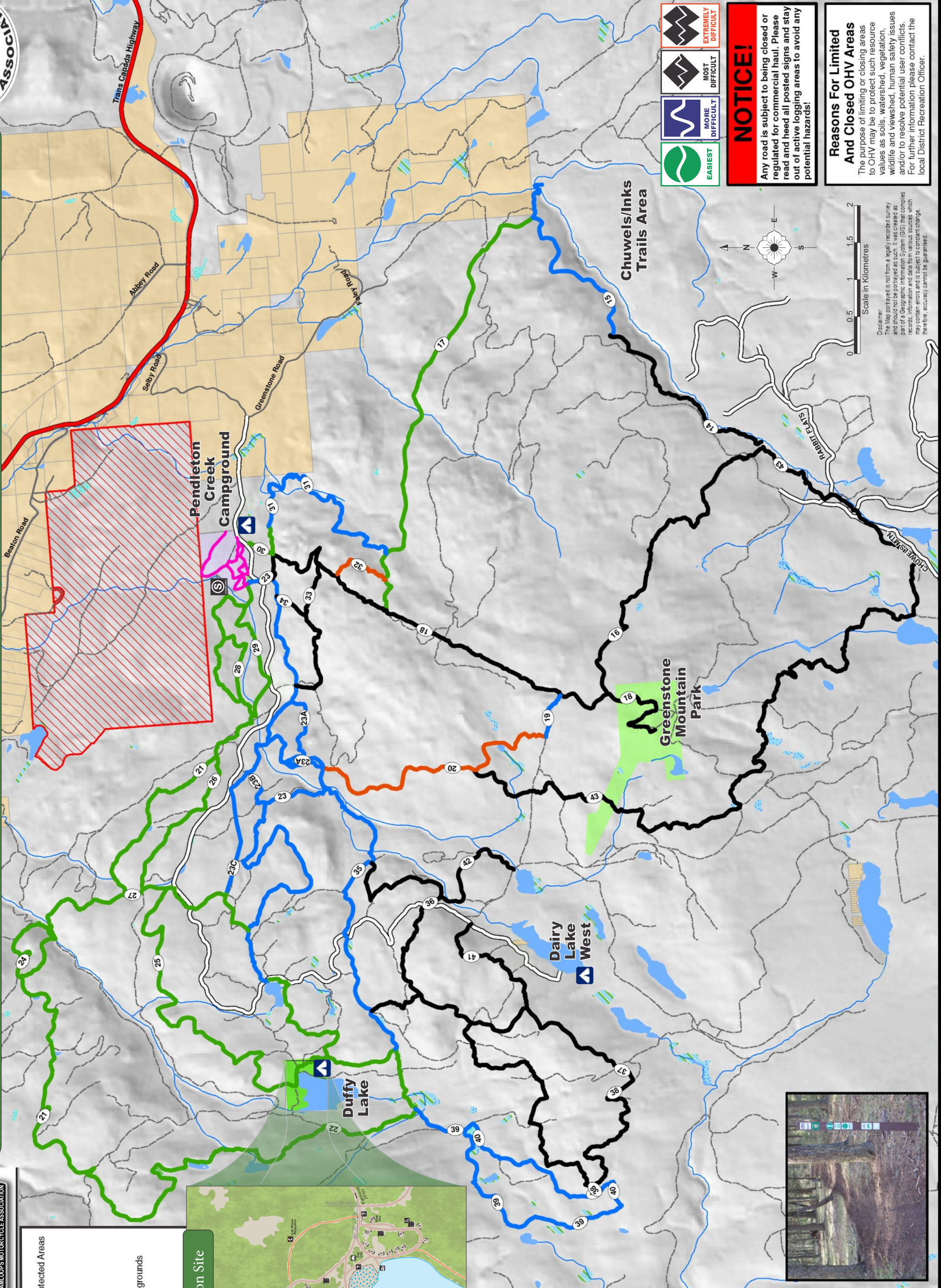


Duffy Lake Recreation Site



Trail #	Ranking	Quads	Name	Length Km's
14	Expert	N	Canyon Trail	3.0
15	Moderate	N	Cherry Creek Express-way	3.2
16	Expert	N	Gap Trail	5.1
17	Easiest	N	G7 De-activated Road	6.6
18	Expert	N	Power Line Hill	6.8
19	Moderate	N	Charcoal Forest	0.6
20	Extreme	N	Kawi Trail	4.1
21	Easiest	Y	2-Day Trail	18.4
22	Easiest	Y	Duffy Connector	3.6
23	Moderate	Y	National Trail	10
23A	Moderate	N	23A	1.9
23B	Moderate	Y	23B	1.3
23C	Moderate	Y	23C	1.9
24	Easiest	Y	Barbare Alley	1.5
25	Easiest	Y	Duffy Loop 1	10.8
26	Easiest	Y	The Twentysixer	2.4
27	Easiest	Y	27	0.6
28	Easiest	Y	28	1.2
29	Easiest	Y	Cow Girl Way	1.9
30	Easiest	Y	30	1.2
31	Moderate	Y	Pendleton Crossing	3.6
32	Extreme	N	Trials Trail	1.0
33	Expert	N	PH Cut-off	2.0
34	Expert	N	Step It Up	0.5
35	Moderate	N	Fun Town	4.7
36	Expert	N	Rock Garden	3.7
37	Expert	N	CR Trail	4.7
38	Expert	N	Site of Heaven	6.3
39	Moderate	N	Durrand Way	4.4
40	Moderate	N	Duffy Scrub	2.0
41	Expert	N	Dairy Way	2.1
42	Expert	N	Highway 93	1.8
43	Expert	N	Three Worlds	14.5
			TOTAL	137.4

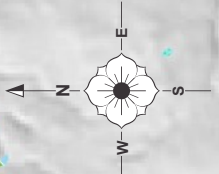
NOTE: All trail ratings are for full size dirt bikes and not 4 wheelers. Ratings are subjective and change due to weather, soil conditions, etc... There will always be hazards so please ride with caution and within your own abilities at all times.



- EASIEST
- MORE DIFFICULT
- MOST DIFFICULT
- EXTREMELY DIFFICULT

NOTICE!
Any road is subject to being closed or regulated for commercial haul. Please read and heed all posted signs and stay out of active logging areas to avoid any potential hazards!

Reasons For Limited And Closed OHV Areas
The purpose of limiting or closing areas to OHV may be to protect such resource values as soils, watershed, vegetation, wildlife and viewshed, human safety issues and/or to resolve potential user conflicts. For further information please contact the local District Recreation Officer.



Disclaimer:
The Map portrayed is not from a legally recorded survey and should not be portrayed as such. It was created as part of a Geographic Information System (GIS) that complies with the standards of the British Columbia Geomatics Centre. Information and data from various sources which may contain errors and is subject to constant change. Therefore, accuracy cannot be guaranteed.